

**Pavement Preservation and Turning Movement Improvements,  
County Route 1 and 222<sup>nd</sup> Street  
County of Leavenworth, Kansas**

**Addendum No. 1**

Issued on June 17, 2026

The conditions set forth in the addendum shall become a part of the Request for Qualifications (RFQ) for the above referenced improvement project. All items, conditions and requirements of the RFQ not specifically addressed in this addendum shall remain in effect.

**THE RFQ SUBMITTAL DEADLINE DATE AND TIME REMAINS UNCHANGED. QUALIFICATION PACKETS WILL BE RECEIVED NO LATER THAN 10:00 AM, JULY 10, 2026.**

**THE DESIGN CONSULTANT AND/OR JOINT VENTURE DESIGN FIRM STAFF SHALL PROVIDE QUALIFICATIONS INFORMATION AS LISTED BELOW.**

**REQUEST FOR ADDITIONAL QUALIFICATIONS**

The original roadway improvements package for County Route 1 and 222<sup>nd</sup> Street is planned to serve the larger future development of the County Road 1 Zoning District. The district is bounded by Honey Creek Road (north), 214<sup>th</sup> Street (east), 222<sup>nd</sup> Street (west), and Cantrell Road (south). The zoning district encompasses 1,920 Acres. Most of the area is also located in the Cow Creek Drainage Watershed. The Cow Creek Drainage Watershed encompasses 2,470 Acres. See attached project location map for boundaries.

Along with the Roadway improvements qualifications, Leavenworth County requests that the Consultants include qualifications for completion of Wastewater Masterplan services for the Cow Creek Watershed and potential design services for Phase 1 – Upper Arm Wastewater Improvements. The extent of Phase 1 – Upper Arm Improvements shall be determined by the consultant. The County anticipates Phase 1 improvements to service the development area north of Hemphill Road. Consultant team submittals will be considered.

The Scope of Services shall include the following:

1. Project flow loadings for the watershed based on land zoning and proposed developments.
2. Identify and evaluate alternative wastewater collection and treatment systems for the watershed.
3. Evaluation of conveyance options to adjacent municipalities.
4. Masterplan interceptor and main layout of the watershed.
5. Evaluate force main and pump station layout for areas within the zoning district located east of the Cow Creek Watershed.
6. Identify the construction phasing masterplan of wastewater improvements.
7. Identify and evaluate alternatives including no-discharge options, reuse water capabilities, and regionalization.
8. Development of cost estimates and conclusion statements for all alternatives.
9. Design of Phase 1 – Upper Arm Wastewater Improvements for initial development project.

**COPY REQUIREMENTS:**

Submit 5 hard copies and one PDF format copy on a USB flash drive. Page content for Wastewater Masterplan Qualifications submittals is the same as Roadway services. Each consultant service shall be limited to 10 pages.

**PRE-SUBMITTAL MEETING:**

No meeting is scheduled.

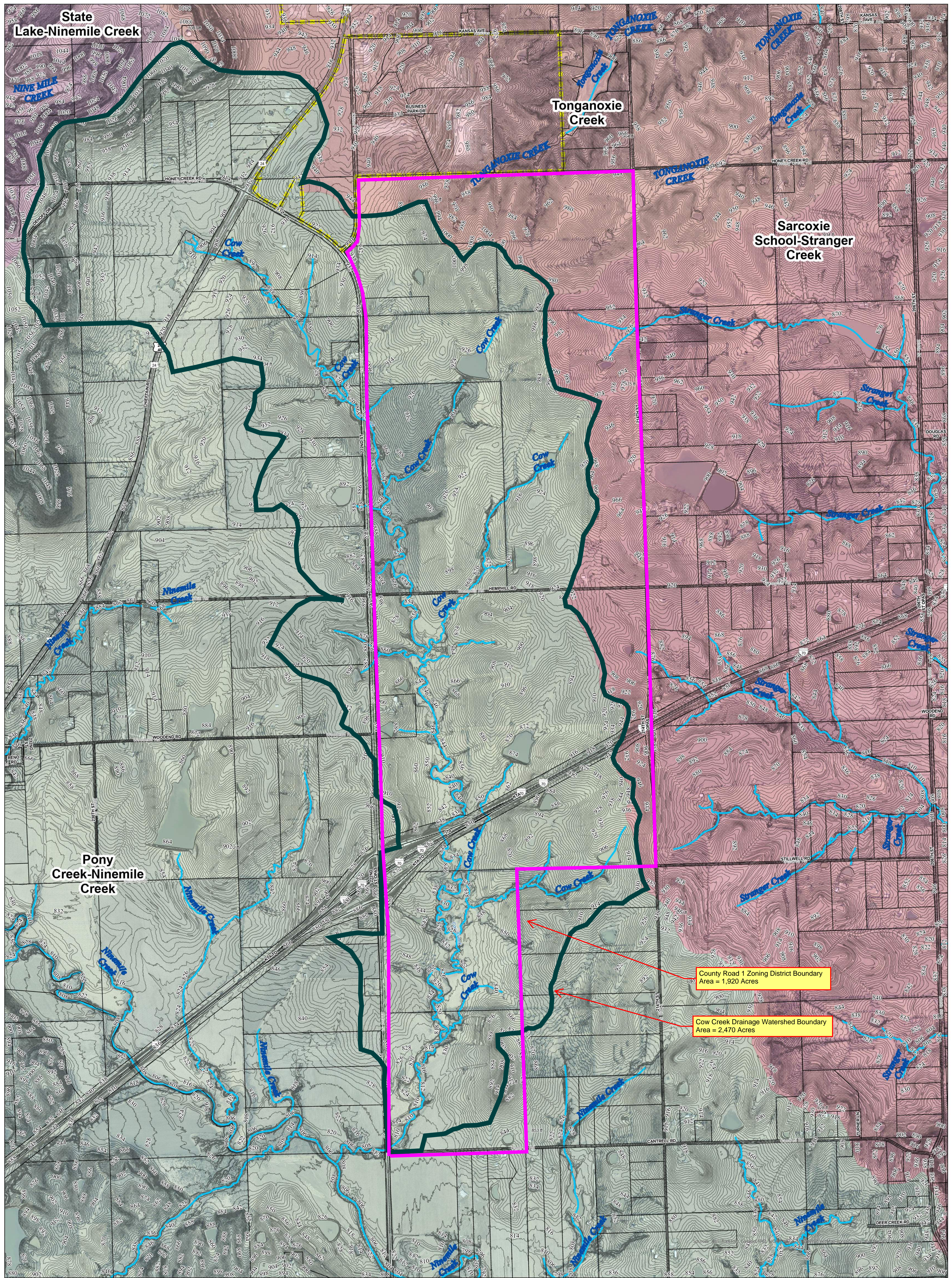
**QUESTIONS:**

Please contact Bill Noll, with questions at email [bnoll@leavenworthcounty.gov](mailto:bnoll@leavenworthcounty.gov). The County will only respond to written questions. Submitted questions less than 72 hours prior to the qualifications being due will not be acted on.

**PROJECT SCHEDULE / FUNDING / SUBMITTAL COMPONENTS / SELECTION CRITERIA – All same as Original RFQ**

**ATTACHMENT**

Project location map



County Road 1 Zoning District Boundary  
Area = 1,920 Acres

Cow Creek Drainage Watershed Boundary  
Area = 2,470 Acres

### Legend

- |  |   |
|--|---|
| <ul style="list-style-type: none"> <li>□ Parcel Boundaries</li> <li>— Road Centerline</li> <li>■ City Limits</li> <li>— Creek</li> </ul> | <h4>Watershed</h4> <ul style="list-style-type: none"> <li>□ Pony Creek-Ninemile Creek</li> <li>□ Sarcoxie School-Stranger Creek</li> <li>□ State Lake-Ninemile Creek</li> <li>□ Tonganoxie Creek</li> </ul> |
|--|---|



0 0.25 0.5 Miles

Leavenworth County  
GIS Department  
300 Walnut Suite 030  
Leavenworth, KS 66048  
Ph: 913-758-6780  
Ph: 913-684-0443

